

## SuperPro-6104N Gang Programmer Quick Start Guide for Production Operators

### Procedure A Starting Up

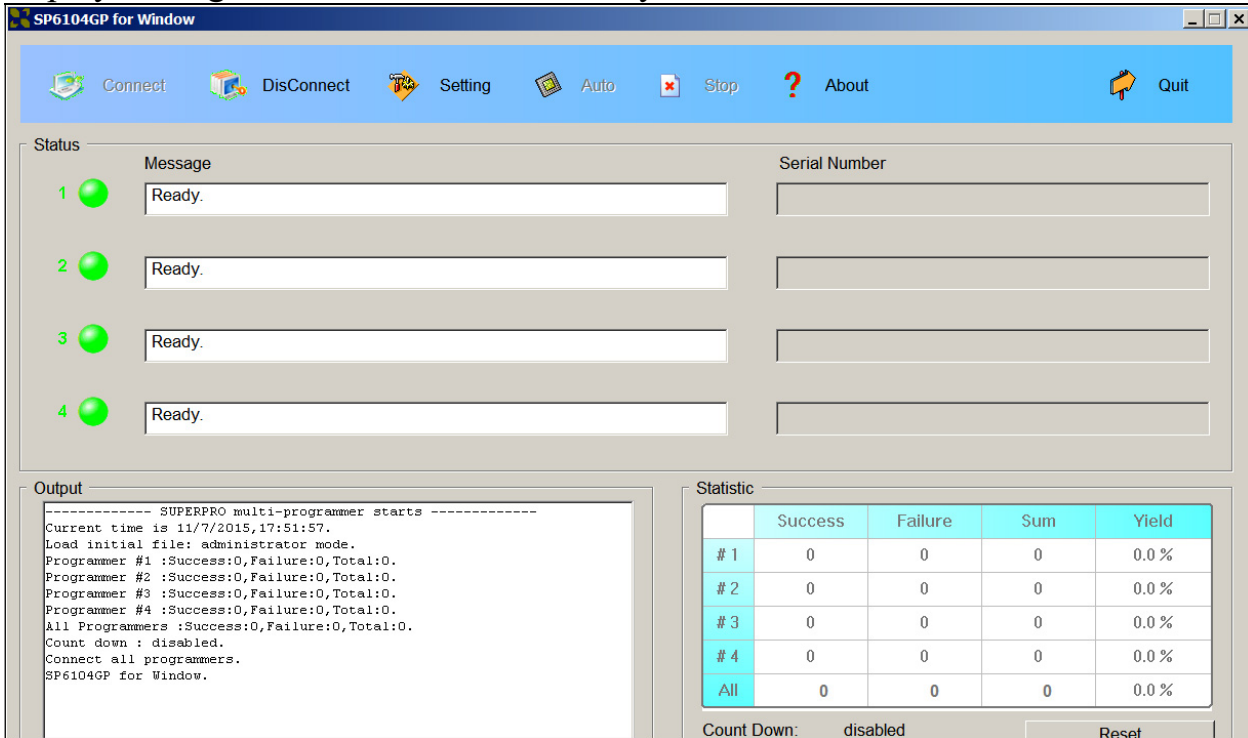
- Connect programmer to AC power source through the supplied AC adapter.
- Connect programmer to a USB port on the computer.
- Power up programmer
- Invoke SuperPro-6104N-GP Software, which displays this screen momentarily while looking for the presence of the hardware:

The screenshot shows the 'multi-programmer' software interface. A 'Waiting...' dialog box is displayed in the center, indicating the software is connecting to the hardware. The main window has a menu bar with 'Connect', 'DisConnect', 'Setting', 'Auto', 'Stop', 'About', and 'Quit'. Below the menu bar, there are four status slots (1-4) for individual programmers. At the bottom, there is an 'Output' window showing the software's startup log and a 'Statistic' table.

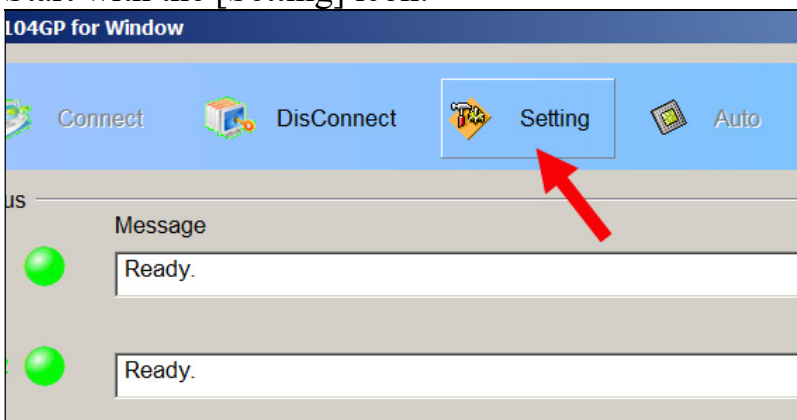
	Success	Failure	Sum	Yield
# 1	0	0	0	0.0 %
# 2	0	0	0	0.0 %
# 3	0	0	0	0.0 %
# 4	0	0	0	0.0 %
All	0	0	0	0.0 %

Count Down: disabled      Reset

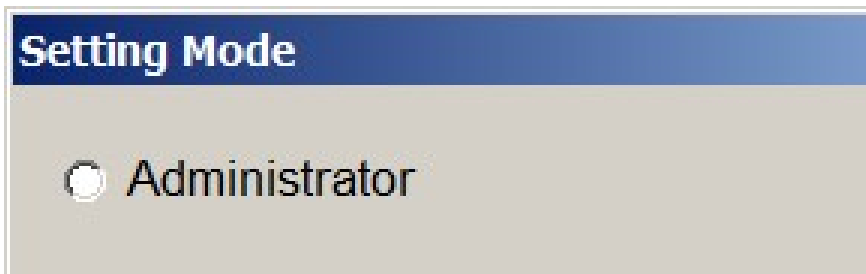
After the software find the four independent programmers within the 6104N-GP, it displays four greens indicators with “Ready”.



Start with the [Setting] icon:

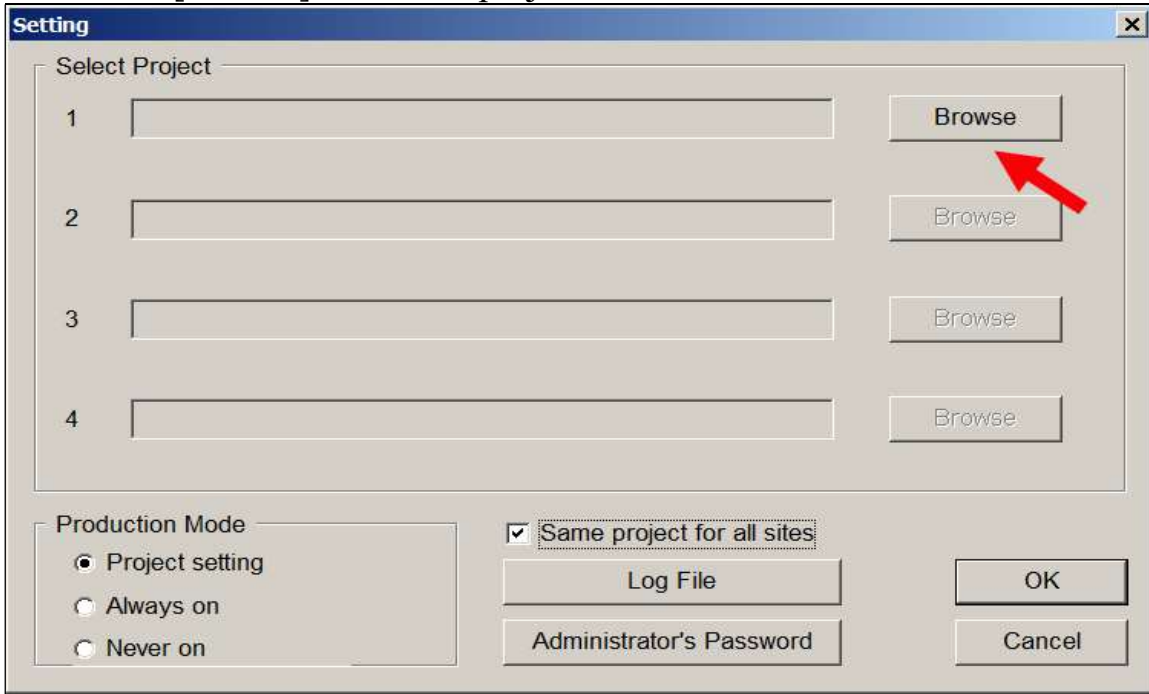


Select Mass – Producer:

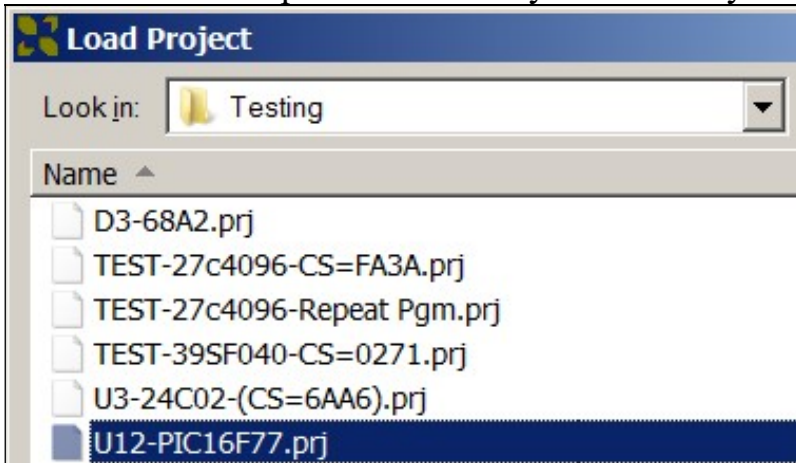


## Procedure B: Select a Project Files

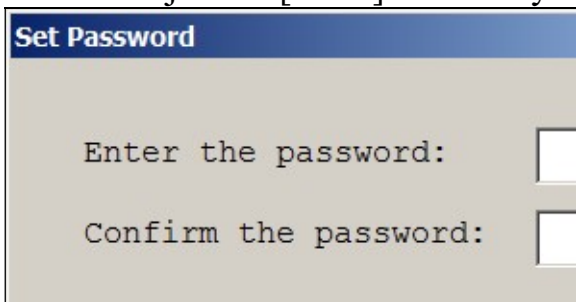
For the most common operations, leave [Same project for all sites] checked. Then click [Browse] to select a project file.



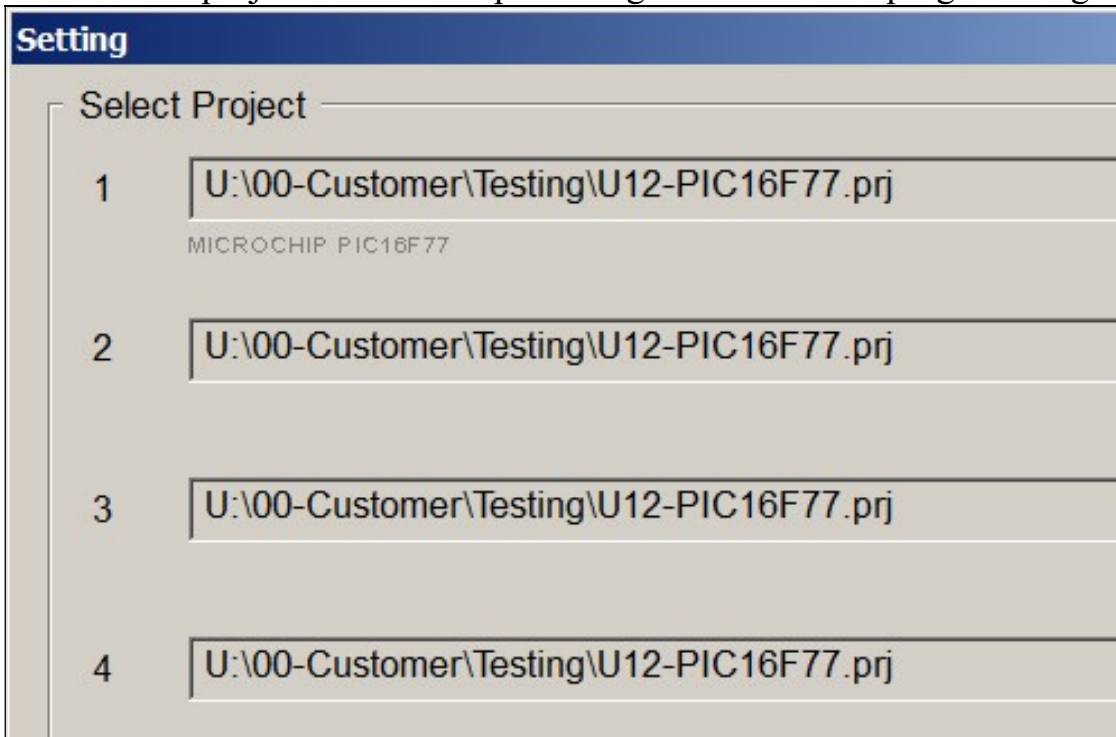
A browse screen opens and allows you to select your project file:



If the administrator has used a password, then you need to enter it here. Otherwise just hit [Enter] on the keyboard, or click [OK] with the mouse.



The selected project file shows up as being used at all four programming sites:



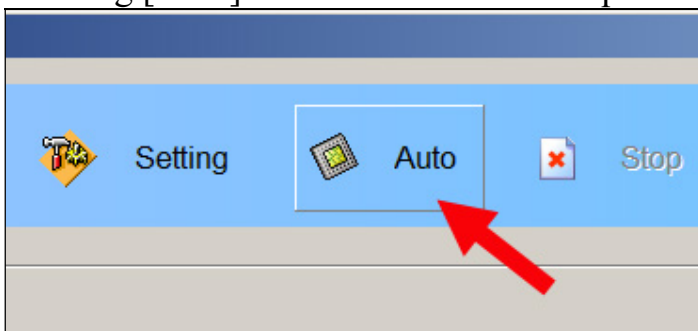
You can click [OK] to get out of the [Setting] screen.

## Procedure C: Programming the IC Devices

We are ready to program the IC devices now.

Load one or more of the programming sites with the IC devices for the selected project.

Clicking [Auto] will invoke the auto-sequence as setup in the project file.



The software shows the progress:

**Status**

Message	Serial Number
1  MICROCHIP PIC16F77 Checksum : 7AF9H	
2  MICROCHIP PIC16F77 Checksum : 7AF9H	
3  MICROCHIP PIC16F77 Checksum : 7AF9H	
4  MICROCHIP PIC16F77 Checksum : 7AF9H	

**Output**

```

Programmer #3 :Success:0,Failure:0,Total:0.
Programmer #4 :Success:0,Failure:0,Total:0.
All Programmers :Success:0,Failure:0,Total:0.
Count down : disabled.
Connect all programmers.
SP6104GP for Window.
User's setting : administrator mode.
Programmer #1 :Ready.
Programmer #2 :Ready.
Programmer #3 :Ready.
Programmer #4 :Ready.
User's setting : administrator mode.
Programmer #1 :Ready.
Programmer #2 :Ready.
    
```

**Statistic**

	Success	Failure	Sum	Yield
# 1	1	0	1	100.0 %
# 2	1	0	1	100.0 %
# 3	1	0	1	100.0 %
# 4	1	0	1	100.0 %
All	4	0	4	100.0 %

Count Down: disabled Reset

and displays the results:

**Status**

Message	Serial Number
1  Success. MICROCHIP PIC16F77 Checksum : 7AF9H	
2  Success. MICROCHIP PIC16F77 Checksum : 7AF9H	
3  Success. MICROCHIP PIC16F77 Checksum : 7AF9H	
4  Success. MICROCHIP PIC16F77 Checksum : 7AF9H	

**Output**

```

Programmer #3 :Success:0,Failure:0,Total:0.
Programmer #4 :Success:0,Failure:0,Total:0.
All Programmers :Success:0,Failure:0,Total:0.
Count down : disabled.
Connect all programmers.
SP6104GP for Window.
User's setting : administrator mode.
Programmer #1 :Ready.
Programmer #2 :Ready.
Programmer #3 :Ready.
Programmer #4 :Ready.
User's setting : administrator mode.
Programmer #1 :Ready.
Programmer #2 :Ready.
    
```

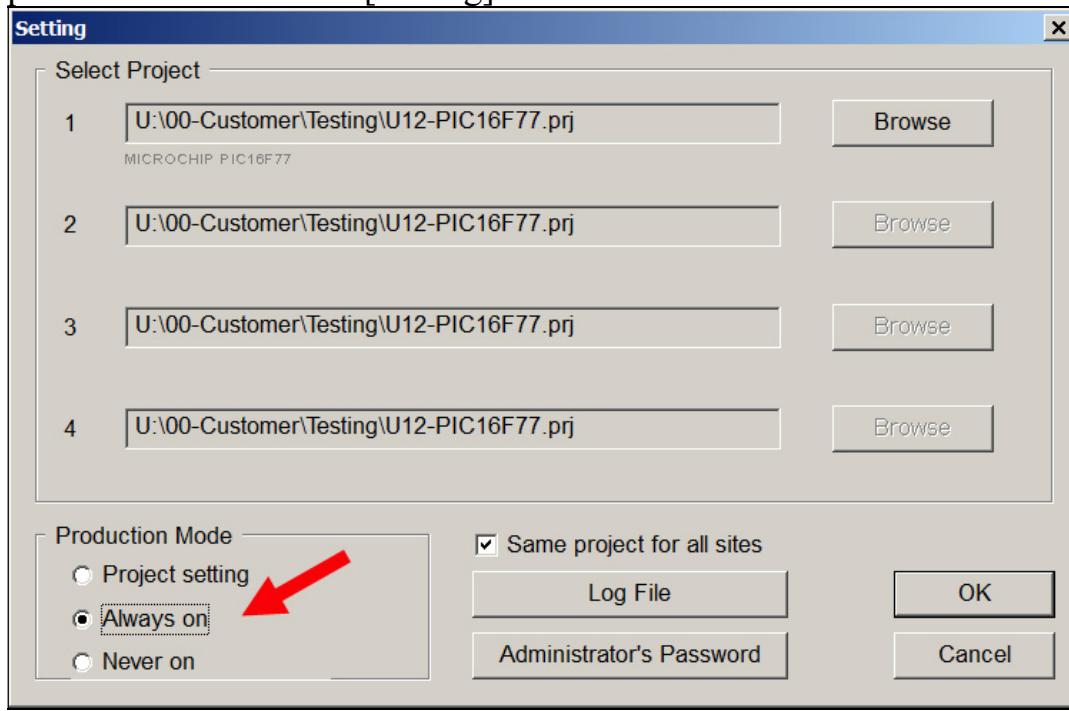
**Statistic**

	Success	Failure	Sum	Yield
# 1	2	0	2	100.0 %
# 2	2	0	2	100.0 %
# 3	2	0	2	100.0 %
# 4	2	0	2	100.0 %
All	8	0	8	100.0 %

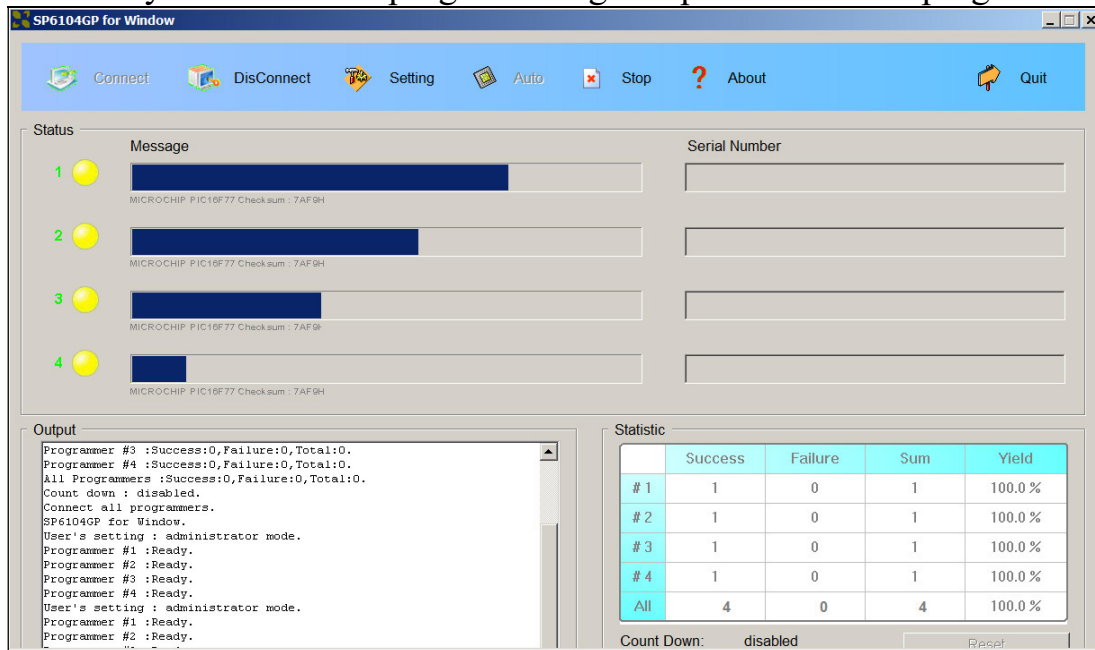
Count Down: disabled Reset

## Procedure D: Programming IC Devices in Production Mode

If the project file has specified [Production Mode], or if you have elected to use production mode in the [Setting] screen:

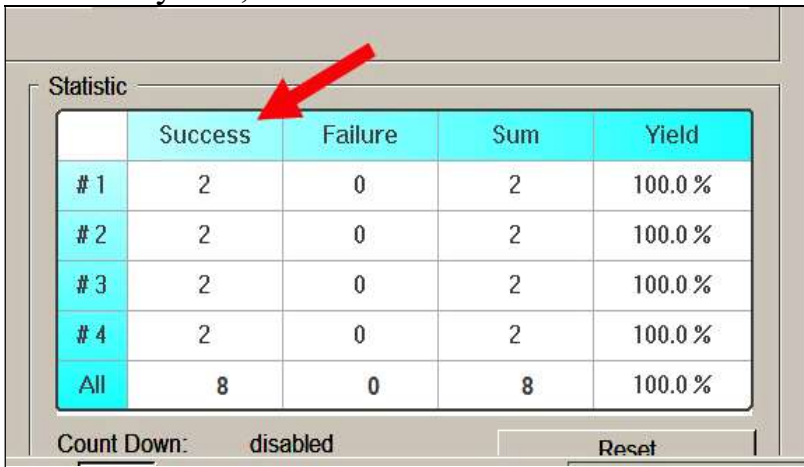


then each socket will start programming as soon as it has been loaded with a chip. In this case you will see the progress being independent at each programming site:



When a chip has finished, you can unload it and put in another chip, without doing anything with your keyboard or mouse.

With the help of the counters in the statistics display, you can decide when a job has been completed. If the failure counts are abnormally high or the yield percentage is abnormally low, it would be cause for alarm.



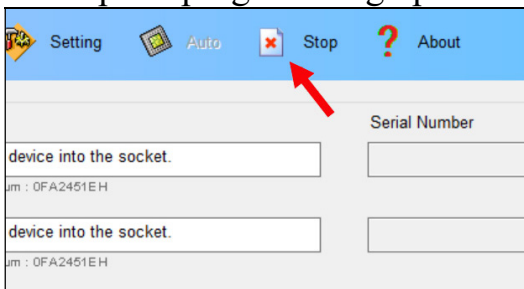
Statistic

	Success	Failure	Sum	Yield
# 1	2	0	2	100.0 %
# 2	2	0	2	100.0 %
# 3	2	0	2	100.0 %
# 4	2	0	2	100.0 %
All	8	0	8	100.0 %

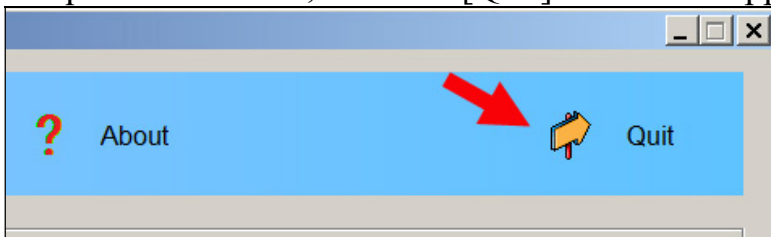
Count Down: disabled      Reset

## Procedure E: Exiting Software

To stop the programming operation, click the [Stop] icon.



To quit the software, click the [Quit] icon at the upper right corner of the screen:



Screen E1

---

Filename: Quick-Start-6104N-Operator.pdf

Revised: Jan 3, 2023